



# ALCATEL A30 PLUS USER GUIDE

---



To learn about	Do this
Frequently Asked Questions	Go to product support on the website: <a href="http://www.alcatelonetouch.us">http://www.alcatelonetouch.us</a>
Updating your phone's system software	First, go to Settings > About > Updates > and then check for any update. If update is available, download and install the update. Follow the prompt. (We recommend that you download update via Wi-Fi internet connection, instead of over the cellular network.)
Finding your serial number or IMEI	On your phone, go to Settings > About phone > Status. Or, you can dial *#06#.
Obtaining warranty service	First follow the troubleshooting tips in this guide before contacting the support hotline. See General Information section for contact information.
Viewing legal information	On the phone, go to Settings > About phone > Legal information.

# Table of Contents

Safety and use .....	5
Radio waves .....	8
Licences.....	12
General information .....	14
<b>1 Your mobile .....</b>	<b>16</b>
1.1 Keys and connectors.....	16
1.2 Getting started .....	19
1.3 Home screen.....	20
<b>2 Text input.....</b>	<b>28</b>
2.1 Using the onscreen keyboard .....	28
2.2 Text editing.....	29
<b>3 Call, Call log and Contacts.....</b>	<b>30</b>
3.1 Call .....	30
3.2 Call log .....	37
3.3 Contacts.....	37
<b>4 Messaging and Email .....</b>	<b>45</b>
4.1 Messaging.....	45
4.2 Email .....	51
<b>5 Calendar, Clock, and Calculator .....</b>	<b>53</b>
5.1 Calendar.....	53
5.2 Clock .....	55
5.3 Calculator.....	59
<b>6 Getting connected.....</b>	<b>60</b>
6.1 Connecting to the internet.....	60
6.2 Connecting to a Bluetooth device.....	62
6.3 Connecting to a computer via USB.....	63
6.4 Sharing your phone's mobile data connection.....	64

6.5	Connecting to virtual private networks.....	65
<b>7</b>	<b>Multimedia applications.....</b>	<b>67</b>
7.1	Camera.....	67
7.2	Gallery.....	70
7.3	Music.....	72
<b>8</b>	<b>Others.....</b>	<b>74</b>
8.1	Files.....	74
8.2	Sound Recorder.....	74
<b>9</b>	<b>Google applications.....</b>	<b>75</b>
9.1	Chrome.....	75
9.2	Gmail.....	75
9.3	Maps.....	75
9.4	YouTube.....	76
9.5	Play Store.....	76
9.6	Drive.....	76
9.7	Play Music.....	76
9.8	Play Movies & TV.....	77
9.9	Photos.....	77
9.10	Keep.....	77
<b>10</b>	<b>Settings.....</b>	<b>78</b>
10.1	Suggestions.....	78
10.2	Wireless & networks.....	78
10.3	Device.....	80
10.4	Personal.....	84
10.5	System.....	91
<b>11</b>	<b>Making the most of your phone.....</b>	<b>95</b>
11.1	FOTA Upgrade.....	95



12 Accessories.....	96
13 Warranty.....	97
14 Troubleshooting .....	99



[www.sar-tick.com](http://www.sar-tick.com)

alcatel

This product meets applicable national SAR limits of 2.0 W/kg. The specific maximum SAR values can be found on page 10 of this user guide.

When carrying the product or using it while worn on your body, either use an approved accessory such as a holster or otherwise maintain a distance of 10 mm from the body to ensure compliance with RF exposure requirements. Note that the product may be transmitting even if you are not making a phone call.



#### **PROTECT YOUR HEARING**

To prevent possible hearing damage, do not listen at high volume levels for long periods. Exercise caution when holding your device near your ear while the loudspeaker is in use.

# Safety and use .....

We recommend that you read this chapter carefully before using your phone. The manufacturer disclaims any liability for damage, which may result as a consequence of improper use or use contrary to the instructions contained herein.

## ● **TRAFFIC SAFETY:**

Given that studies show that using a phone while driving a vehicle constitutes a real risk, even when the hands-free kit is used (car kit, headset...), drivers are requested to refrain from using their phone when the vehicle is not parked. Check the laws and regulations on the use of wireless phones and their accessories in the areas where you drive. Always obey them. The use of these devices may be prohibited or restricted in certain areas.

## ● **CONDITIONS OF USE:**

You are advised to switch off the phone from time to time to optimize its performance.

Remember to abide by local authority rules of mobile phone use on aircrafts.

If your phone is a unibody device, where the back cover and battery are not removable, disassembling the phone will void your warranty. Disassembling the phone can cause bodily injury if the battery is punctured.

Always handle your phone with care and keep it in a clean and dust-free place.

Do not allow your phone to be exposed to adverse weather or environmental conditions, such as moisture, humidity, rain, infiltration of liquids, dust, sea air, etc. The manufacturer's recommended operating temperature range is -20°C (-4°F) to +60°C (140°F).

At over 55°C (131°F), the legibility of the phone's display may be impaired, though this is temporary and not serious.

Do not open, dismantle, or attempt to repair your phone yourself.

Do not drop, throw, or bend your phone.

Use only batteries, battery chargers, and accessories which are recommended by TCL Communication Ltd. and its affiliates and are compatible with your phone model. TCL Communication Ltd. and its affiliates disclaim any liability for damage caused by the use of other chargers or batteries.

Your phone should not be disposed of in a municipal waste.

Please check local regulations for disposal of electronic products.

Remember to make backup copies or keep a written record of all important information stored on your phone.

Some people may suffer epileptic seizures or blackouts when exposed to flashing lights, or when playing video games. These seizures or blackouts may occur even if a person never had a previous seizure or blackout. If you have experienced seizures or blackouts, or if you have a family history of such occurrences, please consult your doctor before playing video games on your phone or enabling a flashing-lights feature on your phone.

Parents should monitor their children's use of video games or other features that incorporate flashing lights on the phones. All persons should discontinue use and consult a doctor if any of the following symptoms occur: convulsion, eye or muscle twitching, loss of awareness, orientation, or movements.

### ● **PRIVACY:**

Please note that you must respect the laws and regulations in force in your jurisdiction or other jurisdiction(s) where you will use your phone regarding taking photographs and recording sounds with your phone. Pursuant to such laws and regulations, it may be strictly forbidden to take photographs and/or to record the voices of other people or any of their personal attributes, and reproduce or distribute them, as this may be considered to be an invasion of privacy. It is the user's sole responsibility to ensure that prior authorization has been obtained, if necessary, in order to record private or confidential conversations or take a photograph of another person; the manufacturer, the seller or vendor of your phone (including the carrier) disclaim any liability which may result from improper use of the phone.

### ● **BATTERY:**

**For a non-unibody device:**

- Do not attempt to open the battery due to the risk of toxic fumes and burns;
- Do not puncture, disassemble, or cause a short circuit in a battery;
- Do not burn or dispose of a used battery in the garbage or store it at temperatures above 60°C (140°F).
- Batteries must be disposed of in accordance with locally applicable environmental regulations.
- Only use the battery for the purpose for which it was designed. Never use damaged batteries or those not recommended by TCL Communication Ltd. and/or its affiliates.

### **For a non-unibody device with a non-removable battery:**

- Do not attempt to eject, replace, or open battery;
- Do not puncture the back cover of your phone;
- Do not burn or dispose of your phone in the garbage or store it at temperatures above 60°C (140°F).

Phone and battery as a unibody device must be disposed of in accordance with locally applicable environmental regulations.

### **For a unibody device:**

Observe the following precautions:

- Do not attempt to open the back cover;
- Do not attempt to eject, replace, or open battery;
- Do not puncture the back cover of your phone;
- Do not burn or dispose of your phone in household rubbish or store it at temperature above 60°C (140°F).

Phone and battery as a unibody device must be disposed of in accordance with locally applicable environmental regulations.



This symbol on your phone, the battery, and the accessories means that these products must be taken to collection points at the end of their life:

- Municipal waste disposal centres with specific bins for these items of equipment;
- Collection bins at points of sale.

They will then be recycled, preventing substances being disposed of in the environment, so that their components can be reused.

### **In European Union countries:**

These collection points are accessible free of charge.

All products with this sign must be brought to these collection points.

### **In non-European Union jurisdictions:**

Items of equipment with this symbol are not to be thrown into ordinary bins if your jurisdiction or your region has suitable recycling and collection facilities; instead they are to be taken to collection points for them to be recycled.

In the United States you may learn more about CTIA's Recycling Program at <http://www.gowirelessgogreen.org/>

**CAUTION: RISK OF EXPLOSION IF BATTERY IS REPLACED BY AN INCORRECT TYPE. DISPOSE OF USED BATTERIES ACCORDING TO THE INSTRUCTIONS.**



**WARNING:** This product contains chemicals known to the State of California to cause cancer and birth defects or other reproductive harm.

● **CHARGERS:**

Home A.C./ Travel chargers will operate within the temperature range of: -10°C (14°F) to 50°C (122°F).

The chargers designed for your phone meet the standard for safety of information technology equipment and office equipment use. Due to different applicable electrical specifications, a charger you purchased in one jurisdiction may not work in another jurisdiction. They should be used for this purpose only.

Characteristics of power supply (depending on the country):

Travel charger: Input: 100-240 V, 50/60 Hz, 200 mA

Output: 5V, 1A

Battery: Lithium 2460 mAh

## Radio waves .....

THIS PHONE MEETS THE GOVERNMENT'S REQUIREMENTS FOR EXPOSURE TO RADIO WAVES.

Your phone is a radio transmitter and receiver. It is designed and manufactured not to exceed the emission limits for exposure to radio-frequency (RF) energy. These limits are part of comprehensive guidelines and establish permitted levels of RF energy for the general population. The guidelines are based on standards that were developed by independent scientific organizations through periodic and thorough evaluation of scientific studies. These guidelines include a substantial safety margin designed to ensure the safety of all persons, regardless of age and health.

The exposure standard for phones employs a unit of measurement known as the Specific Absorption Rate, or SAR. The SAR limit set by public authorities such as the Federal Communications Commission of the US Government (FCC), is 1.6 W/kg averaged over 1 gram of body tissue. Tests for SAR are conducted using standard operating positions with the phone transmitting at its highest certified power level in all tested frequency bands.

This device is complied with SAR for general population /uncontrolled exposure limits in ANSI/IEEE C95.1-1992 and had been tested in accordance with the measurement methods and procedures specified in IEEE1528.

The FCC has granted an Equipment Authorization for this model phone with all reported SAR levels evaluated as in compliance with the FCC RF exposure guidelines. SAR information on this model phone is on file with the FCC and can be found under the Display Grant section of [www.fcc.gov/oet/ea/fccid](http://www.fcc.gov/oet/ea/fccid) after searching on FCC ID: 2ACCJB076 for 5046S, 2ACCJB075 for 5046G.

Although the SAR is determined at the highest certified power level, the actual SAR level of the phone while operating can be well below the maximum value. This is because the phone is designed to operate at multiple power levels so as to use only the power required to reach the network. In general, the closer you are to a wireless base station antenna, the lower the power output of the phone. Before a phone model is available for sale to the public, compliance with national regulations and standards must be shown.

The highest SAR value for 5046S when tested is 1.53 W/Kg for use at the ear and 1.35 W/Kg for use close to the body.

The highest SAR value for 5046G when tested is 0.81 W/Kg for use at the ear and 1.44 W/Kg for use close to the body.

While there may be differences between the SAR levels of various phones and at various positions, they all meet the government requirement for RF exposure. For body-worn operation, the phone meets FCC RF exposure guidelines provided that it is used with a non-metallic accessory with the handset at least 15 mm from the body. Use of other accessories may not ensure compliance with FCC RF exposure guidelines.

Additional information on SAR can be found on the Cellular Telecommunications & Internet Association (CTIA) Web site: <http://www.ctia.org/>

The World Health Organization (WHO) considers that present scientific information does not indicate the need for any special precautions for use of phones. If individuals are concerned, they might choose to limit their own or their children's RF exposure by limiting the length of calls, or using "hands-free" devices to keep phones away from the head and body. Additional WHO information about electromagnetic fields and public health are available on the following website: <http://www.who.int/peh-emf>.

Note: This equipment has been tested and found to comply with the limits for a Class B digital device pursuant to part 15 of the FCC Rules. These limits are designed to provide reasonable protection against harmful interference in a residential installation. This equipment generates, uses and can radiate radio frequency energy and, if not installed and used in accordance with the instructions, may cause harmful interference to radio communications. However, there is no guarantee that interference to radio or television reception, which can be determined by turning the equipment off and on, the user is encouraged to try to correct the interference by one or more of the following measures:

- Reorient or relocate the receiving antenna;
- Increase the separation between the equipment and receiver;
- Connect the equipment into an outlet on a circuit different from that to which the receiver is connected;
- Consult the dealer or an experienced radio/ TV technician for help.

Changes or modifications not expressly approved by the party responsible for compliance could void the user's authority to operate the equipment.

For the receiver devices associated with the operation of a licensed radio service (e.g. FM broadcast), they bear the following statement:

Operation is subject to the following two conditions:

- This device may not cause harmful interference;
- This device must accept any interference received, including interference that may cause undesired operation.

Your phone is equipped with a built-in antenna. For optimal operation, you should avoid touching it or degrading it.

As mobile devices offer a range of functions, they can be used in positions other than against your ear. In such circumstances the device will be compliant with the guidelines when used with a headset or USB data cable.

If you are using another accessory ensure that whatever product is used is free of any metal and that it positions the phone at least 15 mm away from the body.

Please note by using the device some of your personal data may be shared with the main device. It is under your own responsibility to protect your own personal data, not to share with it with any unauthorized devices or third party devices connected to yours. For products with Wi-Fi features, only connect to trusted Wi-Fi networks. Also when using your product as a hotspot (where available), use network security. These precautions will help prevent unauthorized access to your device. Your product can store personal information in various locations including a SIM card, memory card, and

built-in memory. Be sure to remove or clear all personal information before you recycle, return, or give away your product. Choose your apps and updates carefully, and install from trusted sources only. Some apps can impact your product's performance and/or have access to private information including account details, call data, location details and network resources.

Note that any data shared with TCL Communication Ltd. is stored in accordance with applicable data protection legislation. For these purposes TCL Communication Ltd. implements and maintains appropriate technical and organizational measures to protect all personal data, for example against unauthorized or unlawful processing and accidental loss or destruction of or damage to such personal data whereby the measures shall provide a level of security that is appropriate having regard to

- The technical possibilities available;
- The costs for implementing the measures;
- The risks involved with the processing of the personal data, and;
- The sensitivity of the personal data processed.

You can access, review and edit your personal information at any time by logging into your user account, visiting your user profile or by contacting us directly. Should you require us to edit or delete your personal data, we may ask you to provide us with evidence of your identity before we can act on your request.

# Licences.....



microSD Logo is a trademark.



The Bluetooth word mark and logos are owned by the Bluetooth SIG, Inc. and any use of such marks by TCL Communication Ltd. and its affiliates is under licence. Other trademarks and trade names are those of their respective owners.



The Wi-Fi Logo is a certification mark of the Wi-Fi Alliance.

Google, the Google logo, Android, the Android logo, Google Search™, Google Maps™, Gmail™, YouTube, Google Play Store, Google Latitude™, and Hangouts™ are trademarks of Google Inc.

The Android robot is reproduced or modified from work created and shared by Google and used according to terms described in the Creative Commons 3.0 Attribution License (the text will show when you touch **Google legal in Settings > About phone > Legal information**)<sup>(1)</sup>.

You have purchased a product which uses the open source (<http://opensource.org/>) programs mtd, msdosfs, netfilter/iptables and initrd in object code and other open source programs licensed under the GNU General Public Licence and Apache Licence.

We will provide you with a complete copy of the corresponding source codes upon request within a period of three years from the distribution of the product by TCL Communication Ltd.

You may download the source codes from <http://sourceforge.net/projects/alcatel/files/>. The provision of the source code is free of charge from the internet.

<sup>(1)</sup> May not be available in all countries.

## US Information Concerning the Federal Communications Commission (“FCC”) Requirements for Hearing Aid Compatibility with Wireless Devices

When wireless devices are used near hearing devices (such as hearing aids and cochlear implants), users may detect a buzzing, humming, or whining noise. Some hearing devices are more immune than others to this interference, and wireless devices also vary in the amount of interference that they generate.

The wireless telephone industry has developed ratings to assist hearing device users in finding wireless devices that may be compatible with their hearing devices. Not all wireless devices have been rated. Wireless devices that are rated will have the rating displayed on the box together with other relevant approval markings.

The ratings are not guarantees. Results will vary depending on the user’s hearing device and hearing loss. If your hearing device is vulnerable to interference, you may not be able to use a rated wireless device successfully. Consulting with your hearing health professional and testing the wireless device with your hearing device is the best way to evaluate it for your personal needs.

This smartphone has been tested and rated for use with hearing aids for some of the wireless technologies that the smartphone uses. However, other wireless technologies may be used in this smartphone that have not been tested for use with hearing aids. It is important to try the different features of your smartphone thoroughly and in different locations to determine if you hear any interfering noise when using this smartphone with your hearing aid or cochlear implant. Consult your wireless service provider about its return and exchange policies, and for information about hearing aid compatibility.

Hearing aid compatibility rating for this smartphone: M4/T4

### How the ratings work

**M-Ratings:** Wireless devices rated M3 or M4 meet FCC requirements and are likely to generate less interference to hearing devices than wireless devices that are not labeled. M4 is the better or higher of the two ratings.

**T-Ratings:** Wireless devices rated T3 or T4 meet FCC requirements and are likely to be more usable with a hearing device’s telecoil (“T Switch” or “Telephone Switch”) than unrated wireless devices. T4 is the better or higher of the two ratings. (Note that not all hearing devices have telecoils in them.)

Hearing devices may also be measured for immunity to this type of interference. Your hearing device manufacturer or hearing health professional may help you find results for your hearing device. The more immune your hearing aid is, the less likely you are to experience interference noise from wireless devices.

For more information about the actions that the FCC has taken with regard to hearing aid compatibility with wireless devices and other steps that the FCC has taken to ensure that individuals with disabilities have access to telecommunications services, visit [www.fcc.gov/cgb/dro](http://www.fcc.gov/cgb/dro).

FCC ID for 5046S: 2ACCJB076

FCC ID for 5046G: 2ACCJB075

## General information .....

- Website: <http://www.alcatelontouch.us>
- Facebook: [facebook.com/alcatel](https://www.facebook.com/alcatel)
- Twitter: [twitter.com/alcatelmobile](https://twitter.com/alcatelmobile)
- Instagram: [instagram.com/alcatelmobile](https://www.instagram.com/alcatelmobile)
- Contact us: <http://www.alcatelontouch.us/contact>
- Hotline: (855)368-0829 (USA), (855)844-6058 (CANADA)
- Manufacturer: TCL Communication Ltd.
- Address: 5/F, Building 22E, 22 Science Park East Avenue, Hong Kong Science Park, Shatin, New Territories, Hong Kong.
- Electronic labeling path: Touch Settings > Regulatory & Safety or press \*#07#, you can find more information about labeling<sup>(1)</sup>.

<sup>(1)</sup> Vary by Country

## Protection against theft<sup>(1)</sup>

Your phone is identified by an IMEI (phone serial number) shown on the packaging label and in the phone's memory. We recommend that you note the number the first time you use your phone by entering \* # 0 6 # and keep it in a safe place. It may be requested by the police or your carrier if your phone is stolen. This number allows your phone to be blocked preventing a third person from using it, even with a different SIM card.

### 1.1.1 Disclaimer

There may be certain differences between the user manual description and the phone's operation, depending on the software release of your phone or specific carrier services.

TCL Communication Ltd. shall not be held legally responsible for such differences, if any, nor for their potential consequences, which responsibility shall be borne by the carrier exclusively.

### 1.1.2 Warranty

For information on warranty of your device, visit USA and Canada website at [www.alcatelonetouch.us/product-support](http://www.alcatelonetouch.us/product-support) and [www.alcatelonetouch.ca/product-support](http://www.alcatelonetouch.ca/product-support)

### 1.1.3 Electronic Recycling (Within USA Only):

For more information on Electronic Recycling, please:

- Visit Alcatel Electronic Recycling Program website at <http://www.alcatelonetouch.us/electronic-recycling-program>, or
- Call Alcatel US Customer Support at 1-855-368-0829.

### 1.1.4 Battery Recycling (USA & Canada):

Alcatel partners with Call2Recycle<sup>®</sup> to offer a safe and convenient battery recycling program.

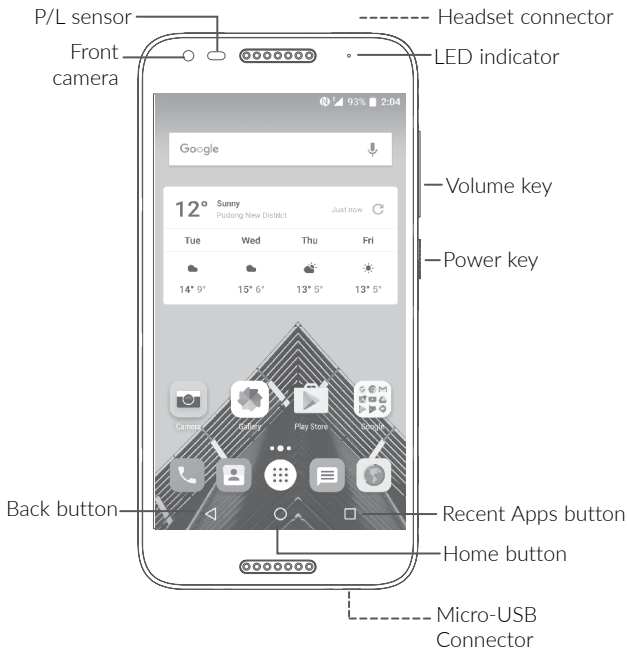
For more information on our Battery Recycling Program, please visit the USA and Canada website at [www.alcatelonetouch.us/battery-recycling](http://www.alcatelonetouch.us/battery-recycling) and [www.alcatelonetouch.ca/battery-recycling](http://www.alcatelonetouch.ca/battery-recycling)

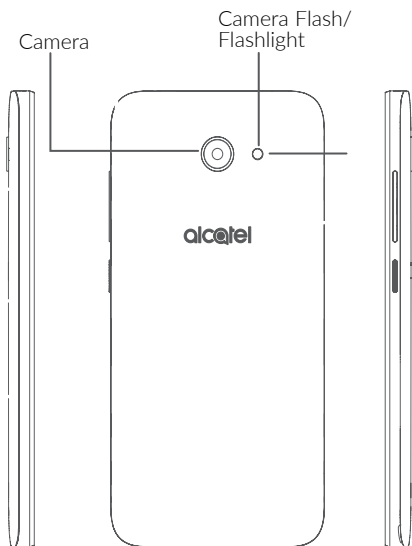
<sup>(1)</sup> Contact your network operator to check service availability.



# 1 Your mobile.....

## 1.1 Keys and connectors







### Recent Apps button

- Touch to open a card view of applications you've worked with recently.



### Home button

- From any application or screen, touch to return to the Home screen.
- Long press to turn on Google Now. You can get help such as getting directions and restaurant information based on the content detected on the screen.



### Back button

- Touch to go back to the previous screen, or close a dialog box, options menu, the Notification panel, etc.



### Power key

- Press: Lock the screen/Light up the screen.
- Press and hold: Show the popup menu to select from Power off/Restart/Airplane mode.
- Press and hold the **Power** key and **Volume** key to make a screenshot.
- Press and hold the **Power** key for at least 10 seconds to force reboot.



### Volume Keys

- In call mode, adjusts the earpiece or headset volume.
- In Music/Video/Streaming mode, adjusts the media volume.
- In general mode, adjusts the ringtone volume.
- Mutes the ringtone of an incoming call.
- In camera preview mode, press **Volume** key to take a photo or press and hold to make burst shot.

## 1.2 Getting started

### 1.2.1 Setting up


#### Inserting or removing the SIM/microSD card

You must insert your SIM card to make phone calls. You do not need to power off your phone before inserting or removing the SIM card as this phone supports hot swap.



Your phone only supports nano-SIM cards. Do not attempt to insert other SIM types like mini and micro cards; otherwise this may cause damage to your phone.

#### Charging the battery

You are advised to fully charge the battery (). Charging status is indicated by a percentage displayed on screen. The percentage increases as the phone is charged.



To reduce power consumption and energy waste when the battery is fully charged, disconnect your charger from the plug; switch off Wi-Fi, GPS, Bluetooth or background-running applications when not in use; reduce the backlight time, etc.

### 1.2.2 Powering on your phone

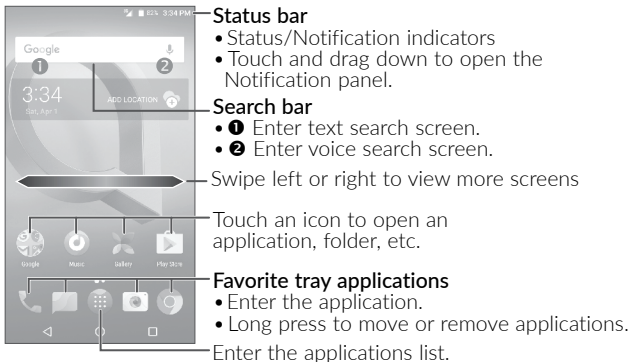
Hold down the **Power** key until the phone powers on, unlock your phone (Swipe, PIN, Password or Pattern) if necessary and confirm. The Home screen is displayed.

## 1.2.3 Powering off your phone

Press and hold the **Power** key until options appear, select **Power off**.

## 1.3 Home screen

You can bring all the items (applications, shortcuts, folders and widgets) you love or use most frequently to your Home screen for quick access. Touch the **Home** button to switch to the Home screen.



### 1.3.1 Using the touchscreen



To access an application, touch it with your finger.

## Long press



To enter the available options for an item, long press the item. For example, select a contact in Contacts, long press this contact, an option list will appear.

## Drag



Long press an item and drag it to another location.

## Slide/Swipe



Slide the screen to scroll up and down the applications, images, and web pages. You can slide the screen horizontally too.

## Flick



Similar to swiping, flicking is a lighter and quicker stroke.

## Pinch/Spread



Place two fingers on the screen surface and draw them apart or together to scale an element on the screen.

The phone also supports one finger zooming in **Gallery**. Double tap the screen to zoom in/out.

## Rotate



Automatically change the screen orientation from portrait to landscape by turning the phone sideways to have a better screen view.

## 1.3.2 Status bar

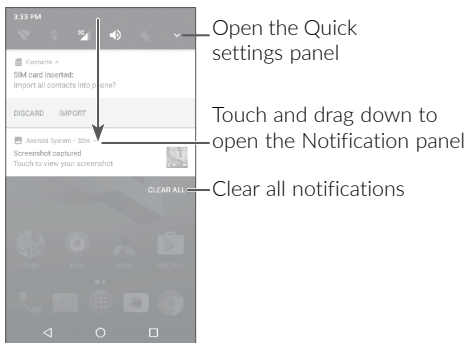
From the Status bar, you can view both phone status (on the right side) and notification information (on the left side).

Drag down the Status bar to view notifications and drag again to enter the Quick settings panel.

Touch and drag up to close it. When there are notifications, you can touch them to access notifications.

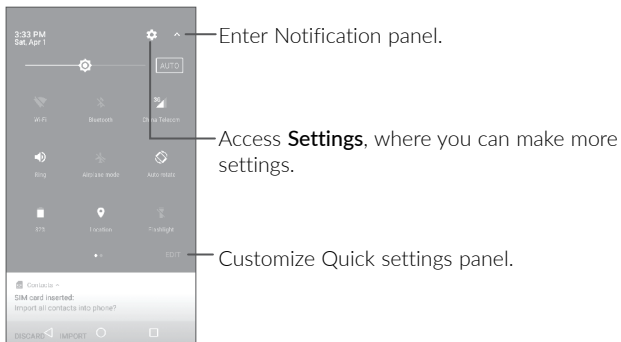
### Notification panel

When there are notifications, touch and drag down the Status bar to open the Notification panel to read more detailed information.



### Quick settings panel

Touch and drag down the Notification panel to open the Quick settings panel. You can enable or disable functions or change modes by touching the icons. Touch **EDIT** to customize your Quick settings panel.




### 1.3.3 Search bar

The phone provides a Search function which can be used to locate information within applications, the phone or the web.






## ❶ Search by text

- Touch the Search bar from the Home screen.
- Enter the text/phrase you want to search for.
- Touch  on the keyboard if you want to search on the web.

## ❷ Search by voice

- Touch  from the Search bar to display a dialog screen.
- Speak the word/phrase you want to search for. A list of search results will display for you to select from.

### 1.3.4 Locking and unlocking your screen

To protect your phone and privacy, you can lock the phone with a pattern, PIN or password, etc.

#### To create a screen unlock pattern

- From the Home screen, touch  to open the applications list, then touch **Settings** > **Lock screen** > **Screen lock** > **Pattern**.
- Draw your own pattern.

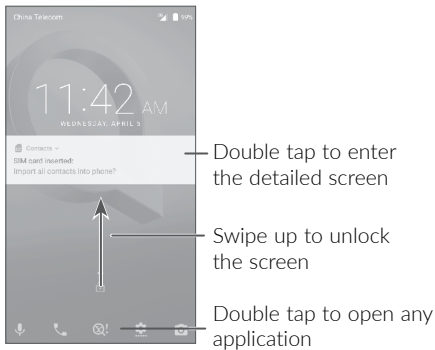
#### To lock phone screen

Press the **Power** key once to lock the screen.

#### To unlock the phone screen

Press the **Power** key once to light up the screen, slide to draw the unlock pattern you have created or enter your PIN or password, etc.

If you have chosen **Swipe** as the screen lock, you can press the **Power** key to light up the screen, then swipe up to unlock the screen.



Double tap to enter the detailed screen

Swipe up to unlock the screen

Double tap to open any application

## 1.3.5 Personalizing your Home screen

### Add

You can long press a folder, an application or a widget to activate the Move mode, and drag the item to your preferred Home screen.

### Reposition

Long press an item and drag it to the desired position and then release. You can move items both on the Home screen and the Favorite tray. Hold the icon on the left or right edge of the screen to drag the item to another Home screen.

### Remove

Long press an item and drag it up to the top of the **X** icon, and release after the item turns red.

## Create folders

To improve the organization of shortcuts or applications on the Home screen and the Favorite tray, you can add them to a folder by stacking one item on top of another. To rename a folder, open it and touch the folder's title bar to input the new name.

## Wallpaper customization

Long press an empty area on the Home screen, then touch **WALLPAPERS** to customize wallpaper.

### 1.3.6 Widgets and recently-used applications

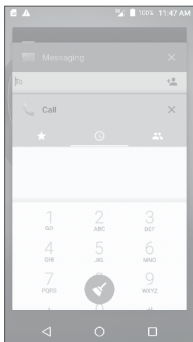
#### Consult widgets

Long press the empty area on the Home screen, then touch **WIDGETS** to display all widgets.


Touch the selected widget and slide it to move to your preferred screen.

#### Consult recently-used applications

To consult recently-used applications, touch the **Recent apps** button. Touch a thumbnail in the window to open the application.



Touch one thumbnail and slide it right/left or touch **X** to close an application.


Touch  at the bottom of the screen to close all the running applications.

### 1.3.7 Volume adjustment

#### Using the volume key

Press the **Volume** key to adjust the volume. To activate the vibrate mode, press the **Volume down** key until the phone vibrates.

#### Using the settings menu

From the Home screen, touch  to open the applications list, then touch **Settings** > **Sound** to set the volume of media, ringtone, alarm, etc. to your preference.

-

# 2 Text input .....

## 2.1 Using the onscreen keyboard

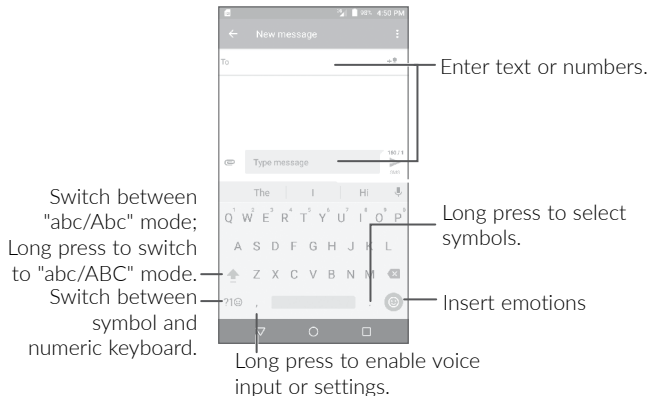
### Onscreen keyboard settings

Go to **Settings > Language & input > Virtual keyboard**, touch the keyboard you want to set up and a series of settings will become available.

### Adjust the onscreen keyboard orientation

Turn the phone sideways or upright to adjust the onscreen keyboard orientation. You can adjust it by changing the settings (**Touch Settings > Display > When device is rotated**).

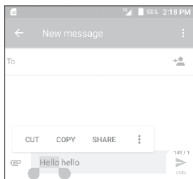
#### 2.1.1 Android keyboard



## 2.2 Text editing

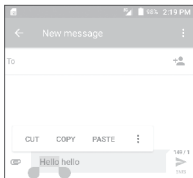
You can edit the texts you entered.

- Long press or double tap within the texts you want to edit.
- Drag the tabs to change the selected texts.
- The following options will show: **SELECT ALL**, **CUT**, **COPY** and **SHARE**.



You can also insert new texts if preferred

- Touch where you want to type, or long press a blank space, the cursor will blink and the tab will show. Drag the tab to move the cursor.
- If you have cut or copied any text, touch the tab to show **PASTE** which allows you to paste any text you have previously copied.




# 3 Call, Call log and Contacts .....

## 3.1 Call.....

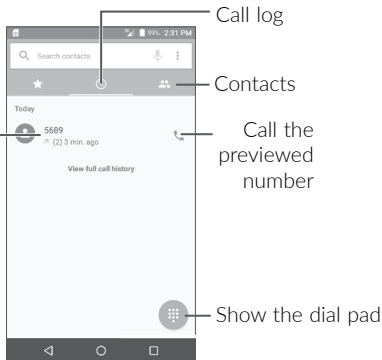


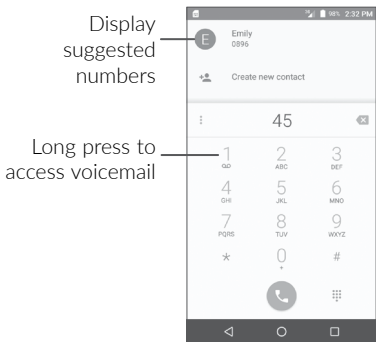
### 3.1.1 Making a call




To make a call, touch .

View the contact's detailed information.


You can also edit, delete, share the contact, or send a message to the contact.








Enter the desired number from the dial pad and touch  to place the call or select a contact from  or  by sliding or touching tabs, then to make the call.

The number you entered can be saved to **Contacts** by touching  **Create new contact**.


If you make a mistake, you can delete the incorrect digits by touching .

To hang up a call, touch .

## International call

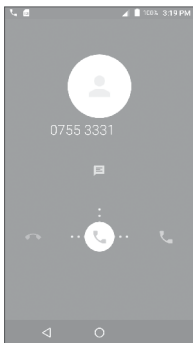
To dial an international call, long press  to enter "+", then enter the international country prefix followed by the full phone number and touch .

## Emergency call




If your phone has network coverage, dial the emergency number and touch  to make an emergency call. This works even without a SIM card and without typing the PIN code.



### 3.1.2 Answering or rejecting a call




When you receive a call:


- Slide  to the right to answer;
- Slide  to the left to reject;
- Slide  upwards to reject the call by sending a preset message.


To mute an incoming call, press the **Volume** key, or turn the phone over (when the **Settings > Gesture > Turn over to mute** option is activated).

### 3.1.3 Calling your voicemail

Your voicemail is provided by your network to avoid missing calls. It works like an answering machine that you can consult at any time.

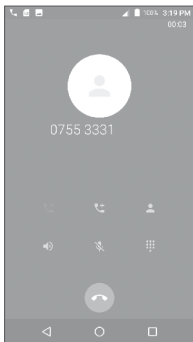
To access your voicemail, long press .

To set your voicemail number: Long press , then touch **ADD NUMBER > Voicemail > Setup > Voicemail number**.

If you receive a voicemail,  appears in the Status bar. Open the Notification panel and touch **New voicemail**.

### 3.1.4 During a call

To adjust the volume during a call, press the **Volume** key.



End the current call.



Touch once to hold the current call. Touch this icon again to retrieve the call.



Touch to add another call.



Touch to enter contact list.



Touch once to activate the speaker during the current call. Touch this icon again to deactivate the speaker.



Touch once to mute the current call. Touch this icon again to unmute the call.



Display the dial pad.



To avoid accidental operation of the touchscreen during a call, the screen will be locked automatically when you put the phone close to your ear; and it will be unlocked when the phone is taken away from your ear.

### 3.1.5 Managing multiple calls





With this phone you can handle multiple calls at the same time.

#### Swap calls


When you accept two calls, touch , you can now switch between two lines. The current call will be put on hold and you are able to join the other call.

#### Conference calls<sup>(1)</sup>

You can set up a conference call as follows.

- Place a call to the first participant of the conference call.
- Touch .
- Enter the phone number of the person you want to add to conference and touch . You can also add participants from **Call log** or **Contacts**.
- Touch  to start the conference.
- Touch  to end the conference call and disconnect all callers.

### 3.1.6 Call settings

Touch  from the **Call** screen, then touch **Settings**. The following options are available:

<sup>(1)</sup> Depending on your network operator.

## Sounds and vibrate

Touch to set incoming call ringtone, and mark the checkbox to enable dial pad tones or vibrate for calls.

## Quick responses

Edit quick responses which will be used when you reject a call with a message.

## Call settings

### • Voicemail

- **Service:** Opens a dialog box where you can select your operator's voicemail service or another service.
- **Setup:** If you are using your operator's voicemail service, this opens a dialog box where you can enter the phone number to use for listening to and managing your voicemail. You can enter a comma (,) to insert a pause into the number – for example, to add a password after the phone number.
- **Sound:** Touch to set the sound when a new voicemail arrives.
- **Vibrate:** Mark the checkbox to enable vibration when a new voicemail arrives.

### • Fixed Dialing Numbers

Fixed dialing number (FDN) is a SIM service mode, where outgoing calls are restricted to a set of phone numbers. These numbers are added to the FDN list. The most common practical application of FDN is for parents to restrict the phone numbers to which their children can dial. For security reasons, you'll be prompted to enable FDN by entering SIM PIN2 which is usually acquired from your service provider or SIM maker.

- **Enable FDN:** Enter SIM PIN2 to enable FDN.
- **Change PIN2:** Update PIN2 for FDN access.
- **FDN list:** Add or manage FDNs.

- **Vibration reminder**

Enable vibrate when a call connects.

- **Service Dialing Numbers**

You can place a call from the SDN list.

- **GSM call settings**

- **Call forwarding**

Touch to configure how your calls are forwarded when you are busy, unanswered or unreachable.

- **Additional settings**

Touch **Caller ID** to use default operator settings to display your number in outgoing calls. Mark the **Call waiting** check box to notify you of new incoming calls during a call.

- **Call barring**

Touch to configure Call barring settings. Mark the checkbox to activate the call barring for outgoing and incoming calls.

- **Assisted dialing**

Check dialing information for each country.

## **Accessibility**

Touch to set up TTY mode or enable hearing aids.

## **Quick dial**

Touch to add or manage quick-dial numbers.


## **Manage Accounts**

Touch to add an account to sync contact informations.

## Display options

- **Sort by:** Touch to sort the list by the first name or last name.
- **Name format:** Touch to choose whether to display first name first, or last name first.

## 3.2 Call log

You can access your call log by touching  from the **Call** screen to view Missed calls, Outgoing calls and Incoming calls.

Touch a contact or number to view information or further operations, you can launch a new call, send SMS to the contact or number, view detailed information of the call, or clear the call.

Touch **View full call history** to view all call log, touch  to clear the entire call memory.

## 3.3 Contacts.....

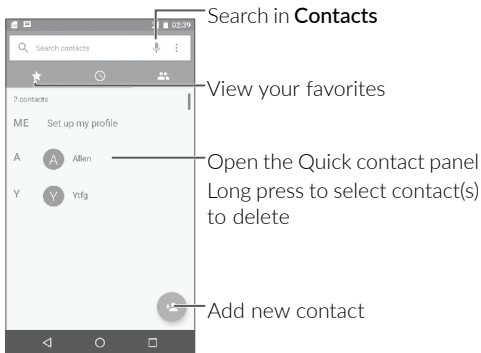


**Contacts** enables quick and easy access to the contact you want to reach.




You can view and create contacts on your phone and synchronize them with your Gmail contacts or other applications on the web or on your phone.

### 3.3.1 Consult your Contacts

To see your contacts, touch .




## Delete a contact

Long press the contact you want to delete, then touch  and confirm to delete. Touch  to select all contacts, then touch  and confirm to delete all contacts.




The contact you have deleted will also be removed from other applications on the phone or web the next time you synchronize your phone.

Touch  to display the contacts list option menu, following actions are enabled:

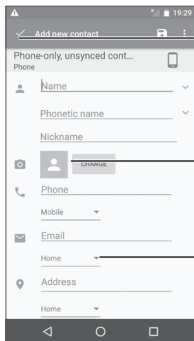
- **Call history** View call logs.
- **Group** Add contacts into groups or manage groups.
- **Contacts to display** Choose contacts to display.
- **Import/Export** Import or export contacts between phone, SIM card, microSD card and phone storage, etc.
- **Clear frequents** Clear frequently contacted list.
- **Block numbers** Add numbers here so that you won't receive the calls or texts from them.
- **Merge contacts** Select duplicate contacts to merge.
- **Settings** Change settings related to call, voicemail, display, etc.

### 3.3.2 Adding a contact

Touch  in the contact list to create a new contact.

You are required to enter the contact's name and other contact information. By scrolling up and down the screen, you can move from one field to another.






When finished, touch the icon to save


Select a picture or take a photo for the contact


Touch to open available labels

When finished, touch  to save.

To exit without saving, you can touch  and then touch **Discard changes**.

### Add to/remove from Favorites<sup>(1)</sup>

To add a contact to favorites, you can touch a contact to view details then touch  to add the contact to favorites.

To remove a contact from favorites, touch the star  on the contact details screen.



### 3.3.3 Editing your contacts

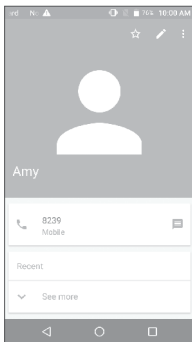
To edit contact information, touch  in the contact details screen to edit.

When finished, touch  to save.

<sup>(1)</sup> Only phone contacts can be added to Favorites.

### 3.3.4 Use Quick contact for Android


Touch a contact to open Quick contact for Android, then you can touch  or the number to make a call, touch  to send a message.







The icons available on the Quick contact panel depend on the information you have for the contact and the applications and accounts on your phone.

### 3.3.5 Contact groups


Contact groups let you easily classify the contacts into different groups. You will have clear view of the contacts by grouping them.


Touch  on the contact list screen, then touch **Group** to access contact groups. There are four preset groups: **Co-workers**, **Family**, **Friends**, **My contact**.

To add a contact into a group, select the group name and touch , then touch **Edit**, type in the contact's name, it will automatically display related contacts, select one, or you can add a contact by touching , and touch .

You can also add more groups by touching , type in the related information and touch .


### 3.3.6 Displaying contacts

You can configure which list of contacts, for each account, you want to display in the Contacts list. Touch  and touch **Contacts to display** from contacts list screen, then you can choose which contacts to display.



Touch  and touch **Settings > Display options > Sort by** to sort the list by touching **First name** or **Last name**, as well as viewing contact names by touching **Name format** and select **First name first** or **Last name first**.

### 3.3.7 Importing, exporting and sharing contacts

This phone enables you to import or export contacts between your phone, SIM card and phone storage.


From the Contacts screen, touch  to open the options menu, touch **Import/Export**, then select to import/export contacts from/to your accounts, SIM card, Phone, internal storage, micro SD card, etc.

You can share a single contact or contacts with others by sending the contact's vCard to them via Bluetooth, Gmail, etc.

Touch the contact you want to share, touch  and **Share** from the contact details screen. Select the number you want to share and touch , and then select the application to perform this action.



### 3.3.8 Block unwanted numbers

You can block unwanted numbers, in this case, you won't receive calls or text from these numbers.



Touch  on the contact list screen, then touch **Block number**. Touch **ADD A NUMBER** and type in the phone number, touch **BLOCK** to confirm.

### 3.3.9 Linking/Unlinking contacts<sup>(1)</sup>

You can link any new contact information to existing ones.



Touch the contact which you want to add information to, touch  to enter edit contact screen, then touch  again and touch **Link**.

At this time, you are required to select the contact whose information you want to join with the first contact. The information from the second contact is added to the first one, and the second contact will no longer be displayed in the Contacts list.

To separate contact information, touch the contact whose information you want to separate, touch  to enter edit contact screen, then touch  again and touch **Unlink**, touch **OK** to confirm.


### 3.3.10 Merge contacts

To avoid duplicate contacts, you can merge contacts in a single action.

Touch  and touch **Merge contacts**, duplicated contacts appears, touch  to merge them into one entry.

### 3.3.11 Synchronizing contacts in multiple accounts


Contacts, data or other information can be synchronized from multiple accounts, depending on the applications installed on your phone.

To add an account, touch  from the contacts list and touch **Manage Accounts** > **Add account**, or from the home screen, touch then **Settings** > **Accounts** > **Add account**.


<sup>(1)</sup> Only applicable for phone contacts.

You are required to select the kind of account you are adding, like Google, Corporate, etc.

As with other account setup, you need to enter detailed information, like username, password, etc.

You can remove an account and all associated information from the phone. Touch the account you want to delete, touch  and select **Remove account**, then confirm.

### **Auto-sync**

On the **Accounts** screen, touch  and mark the **Auto-sync data** checkbox. When activated, all changes to information on the phone or online will be automatically synchronized with each other.

# 4 Messaging and Email.....

## 4.1 Messaging.....

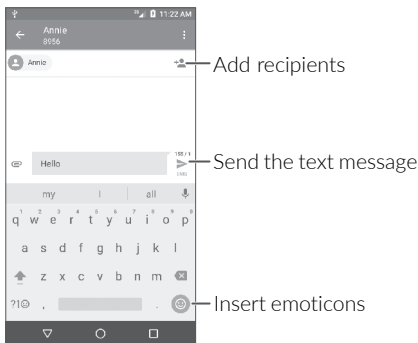


You can create, edit and receive SMS and MMS with this phone.

To send a message, touch .




### 4.1.1 Write a new message

On the message list screen, touch to write text/multimedia messages.



For saved contacts, touch the photo to open the Quick contact panel to communicate with the contact. For unsaved contacts, touch to add the number to your **Contacts**.

## Sending a text message

Enter the name or the phone number of the recipient in the **To** bar or touch  to add recipients. Touch the **Send message** bar to enter the text of the message. Touch  to insert emoticons. When finished, touch  to send the text message.

An SMS message of more than 160 characters will be charged as several SMS. A counter will be on the right of the text box to remind you how many characters are allowed to be entered in one message.





Specific letters (accented) will also increase the size of the SMS, this may cause multiple SMS to be sent to your recipient.

## Sending a multimedia message

MMS enables you to send video clips, images, photos, animations, slides and sounds to other compatible mobiles and e-mail addresses.


An SMS will be converted to MMS automatically when media files (image, video, audio, slides, etc.) are attached or subject or email addresses are added.

To send a multimedia message, enter the recipient's phone number in the **To** bar and touch the **Send message** bar to enter the text of the message.

Touch  to open the options menu, touch **Add subject** to insert a subject. Touch  to attach a picture, video, audio or contact..










When finished, touch  to send the multimedia message.

### 4.1.2 Manage messages

When receiving a message,  will appear in the Status bar as a notification. Drag down the Status bar to open the Notification panel, touch the new message to open and read it. You can also access the Messaging application and touch the message to open it.

Messages are displayed as conversation.

Touch a message to enter the message composing screen:

- Touch  to call the number;
- Touch  to save the number to contacts or view the contact details if the number has been saved;
- To reply to a message, enter the text, or touch  to insert quick text, contact etc., when finished, touch  .
- If you long press a message, the following options will be available: delete , turn off notification , add number to contacts , deselect the message , etc., touch  to make further operations.

### 4.1.3 Adjust message settings

On the message list screen, touch  and select **Settings**.



## GENERAL

- **SMS enabled** Open the options dialog or touch **SMS app** to change your default SMS app.
- **Quick text** Touch to edit quick response text.

## Storage

- **Delete old messages** Select to delete old messages when the maximum number of stored messages is reached.
- **Text message limit** Touch to set the maximum number of text messages to be saved per conversation.
- **Multimedia message limit** Touch to set the maximum number of multimedia messages to be saved per conversation.
- **Text message storage location** Touch to select the location where messages are stored.

## Notifications

- **Notifications** Select to display message notifications in the Status bar.
- **Select ringtone** Touch to select a ringtone as a new message notification tone.
- **Vibrate** Select to have phone vibrate as a notification when receiving a new message.

## WAP message settings

- **WAP message enable** Touch to enable receipt of push messages from network.

## Cell Broadcast settings

- **Cell broadcast** Mark the checkbox to enable receipt of cell broadcast messages.
- **Select CB ringtone** Touch to select CB ringtone when receiving cell broadcast messages.
- **Enable CB LED indicator** Mark the checkbox to enable CB LED indicator.
- **Enable light up screen** Mark the checkbox to light up the screen when receiving new cell broadcast.
- **Vibrate** Select to have phone vibrate as a notification when receiving a new message.
- **Cell broadcast settings** Touch to select channels and configure languages.
- **Emergency alerts** Touch to enter emergency alert settings, including whether to show threats and alert tones.

## ADVANCED

### Text message (SMS) settings

- **Delivery reports** Select to request a delivery report for each text message you send.
- **Manage SIM messages** Touch to manage text messages stored in your SIM card.
- **SMS Service Centre** Touch to edit or view the service centre number.
- **Character code** Touch to select message encode format.
  
- **SMS auto switch to MMS** Mark the checkbox to automatically change SMS to MMS when you input more than 160 words or add attachments.
- **SMS signature** Mark the checkbox to enable a signature for the messages you send.
- **Edit SMS signature** Touch to edit SMS signature.

### Multimedia message (MMS) settings

- **Delivery reports** Select to request a delivery report for each multimedia message you send.
- **Read reports** Select to request a report on whether each recipient has read a multimedia message sent by you.
- **Auto-retrieve** Select to download the full MMS message (including message body and attachment) automatically to your phone. Otherwise, download only the MMS message header.

- **Roaming auto-retrieve** Select to download the full MMS message (including message body and attachment) automatically when roaming. Otherwise, download only the MMS message header to avoid extra charges.
- **Creation mode** Select to change creation mode.
- **Maximum message size** Select to input the maximum message size.
- **Priority** Touch to set the priority.

## 4.2 Email .....




The first time you set up your phone, you can select to use an existing Email or to create a new Email account.





You can also set up external POP3 or IMAP email accounts in your phone.


To set up your email account, touch  from the Home screen, then select **Email**.


An email wizard will guide you through the steps to set up an email account.

- Enter the email address and password of the account you want to set up.
- Touch **Next**. If the account you entered is not provided by your service provider in the phone, you will be prompted to go to the email account settings screen to enter settings manually. Alternatively, you can touch **Manual setup** to directly enter the incoming and outgoing settings for the email account you are setting up.
- Enter the account name and display name in outgoing emails.
- To add another email account, you can touch  on the upper left corner and select **Settings**. And then touch **Add account**.

## To create and send emails

- Touch  from the Inbox screen.
- Enter recipient(s) email address(es) in the **To** field.
- If necessary, touch **Cc/Bcc** to add a copy or a blind carbon copy to the message.
- Enter the subject and the content of the message.
- Touch  to add an attachment.
- If you do not want to send the mail right away, you can touch  and **Save draft** or touch the **Back** key to save a copy.
- Touch  to send.

If you do not want to send or save the email, you can touch  and then select **Discard**.

To add a signature to your emails, touch  and select Settings, then choose the account where you want to create or modify the signature, touch Signature to edit.

# 5 Calendar, Clock, and Calculator .....

## 5.1 Calendar .....

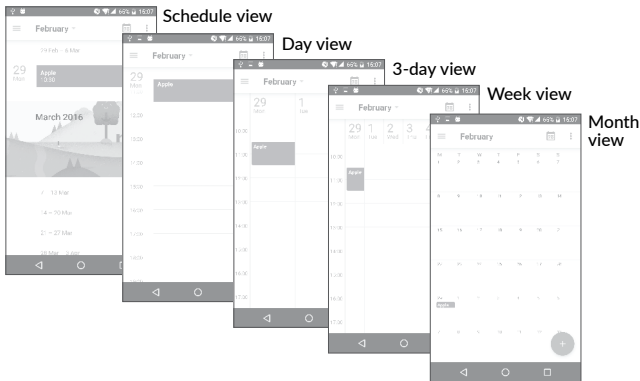


You can use **Calendar** to keep track of important meetings, appointments, etc.

To view the calendar and create events, touch from the Home screen, then touch **Calendar**.

### 5.1.1 Multimode view



You can display the Calendar by **Schedule**, **Day**, **3-day**, **Week**, or **Month**.




(1) The icon will vary with date.

## 5.1.2 To create new events



You can add new events from any Calendar view.

- Touch .
- Fill in all required information for this new event. If it is a whole-day event, you can turn on  of **All-day**.
- Invite guests to the event. Enter the email addresses of the guests you want to invite with commas to separate. The guests will receive an invitation from Calendar and Email.
- When finished, touch **SAVE** from the top of the screen.


To quickly create an event from the Week view screens, touch an empty spot to select a target area which will then turn , and touch the icon to create the new event.

Before you can add an event, you must add at least one Calendar account and make a calendar visible.

## 5.1.3 To delete or edit an event

To delete or edit an event, touch the event to enter its details screen, touch  to edit the event, touch  and **Delete** to remove the event.

## 5.1.4 Event reminder

If a reminder is set for an event, the upcoming event icon  will appear in the Status bar as a notification when the reminder time arrives.

Touch and drag down the Status bar to open the Notification panel, touch an event name to view the Calendar notification list.

Touch the **Back** button to keep the reminders pending in the Status bar and the Notification panel.

## 5.2 Clock .....



Your mobile phone has a built-in clock.

To view the current time, touch  from the Home screen, then touch **Clock**.


### 5.2.1 World clock


To view the world clock, touch  on the Time screen.

Touch  to add a time zone.

### 5.2.2 Alarm

From the Time screen, touch  to enter the **Alarm** screen.

Turn on  to enable the alarm.

Touch  to add a new alarm, the following options will appear:

- **Time** Touch to set the alarm time.
- **Repeat** Touch to select the days when you want the alarm to work.
- **Ringtone** Touch to select a ringtone for the alarm.
- **Vibrate** Select to activate vibration.
- **Label** Touch to set a name for the alarm.





Touch a currently existing alarm to enter the alarm editing screen.

Touch  then touch  to delete the selected alarm.









### 5.2.3 Countdown

From the Time screen, touch  to enter the **Countdown** screen.

- Enter the time. The time should be typed in second, minute and hour number sequence.
- Touch  to activate **Countdown**.
- Touch  to set the countdown time in panel.
- Touch  to deactivate Countdown.
- Touch  to delete current countdown label.

### 5.2.4 Timer

From the Time screen, touch  to enter the **Timer** screen.

- Touch  to start the timer.
- Touch  to show a list of records according to the updated time.
- Touch  to halt the total and lap times. These will only restart after  is touched.
- Touch  to delete the record.
- Touch  to share.

## 5.2.5 Adjust Clock settings

Touch  and then **Settings**, the following options can now be adjusted:

### Clock

- **Style** Touch to set the clock style to **Analogue** or **Digital**.
- **Automatic home clock** Mark the checkbox to enable the function when travelling in an area where the time is different, add a clock for home.
- **Home time zone** Touch to set Home time zone.
- **Change Date & time** Touch to enable automatic data & time, or change time manually.

## Alarms

- **Silence after** Touch to set a temporary turn off time for an alarm.
- **Snooze length** Touch to set the duration of alarms.
- **Alarm volume** Touch to set alarm volume.
- **Gradually increase volume** Touch to select the duration after which the alarm volume increases, or disable this function.
- **Volume buttons** Touch to set **Volume** key behaviors when alarm sounds: **None**, **Snooze** or **Dismiss**.
- **Default alarm tone** Touch to select alarm from ringtone or music.
- **Shake action** Touch to set the action when shaking the phone.
- **Start week on** Touch to choose the start of a week.

## Timers

- **Timer ringtone** Touch to select the timer ringtone.

## 5.3 Calculator.....



With the Calculator, you can solve many mathematical problems.

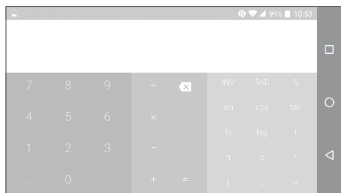
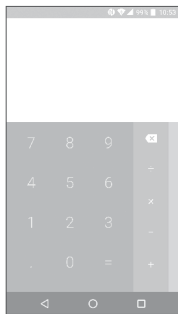
To use the calculator, touch  from the Home screen, then touch **Calculator**.



There are two panels available: Basic panel and Advanced panel.

To switch between panels, select one of the following two ways:

- Swipe the basic calculation screen to the left to open the scientific calculation.

Or turn the phone to the landscape orientation from the basic panel to open the scientific calculation. This option only available if **Settings > Display > When device is rotated > Rotate the contents of the screen** is on.



Enter a number and the arithmetic operation to be performed, enter the second number, then touch “=” to display the result. Touch  to delete digits one by one, long press  to delete all at a time.

# 6 Getting connected .....

To connect to the internet with this phone, you can use GPRS/EDGE/3G/4G networks or Wi-Fi, whichever is most convenient.

## 6.1 Connecting to the internet

### 6.1.1 GPRS/EDGE/3G/4G



The first time you turn on your phone with your SIM card inserted, it will automatically configure your network service: GPRS, EDGE , 3G or 4G.

If the network is not connected, you can turn on mobile data in **Settings > Data usage**.

To check the network connection you are using, touch **Settings > More > Cellular networks > Access Point Names** or **Network operators**.

#### To create a new access point

A new GPRS/EDGE/3G/4G network connection can be added to your phone with the following steps:

- Touch **Settings > More > Cellular networks > Access Point Names**.
- Touch  to enter the required APN information.
- When finished, touch  and touch **Save**.

#### To activate Data roaming

- Touch **Settings > More > Cellular networks**.
- Touch **Data roaming access** and choose roaming modes: **Disable**, **National roaming only**, **All networks**.
- When Data roaming is disabled, you can still perform data exchange with a Wi-Fi connection (refer to “**6.1.2 Wi-Fi**”).


## To set preferred network mode

- Touch **Settings** > **More** > **Cellular networks** > **Preferred network type**.

## 6.1.2 Wi-Fi



You can connect to the internet when your phone is within range of a wireless network. Wi-Fi can be used on your phone even without a SIM card inserted.

### To turn Wi-Fi on and connect to a wireless network

- Touch **Settings** > **Wi-Fi**.
- Turn on .
- Once Wi-Fi is turned on, detected Wi-Fi networks are listed.
- Touch a Wi-Fi network to connect to it. If the network you selected is secured, you are required to enter a password or other credentials (you may contact the network operator for details). When finished, touch **CONNECT**.

### To activate notification when a new network is detected


When Wi-Fi is on and the network notification is activated, the Wi-Fi icon will appear in the Status bar whenever the phone detects an available wireless network within range. The following steps activate the notification function when Wi-Fi is on:

- Touch **Settings** > **Wi-Fi**.
- Touch .
- Turn on  besides **Network notification**.

### To add a Wi-Fi network

When Wi-Fi is on, you may add new Wi-Fi networks according to your preference.

- Touch **Settings** > **Wi-Fi** .

- Touch then touch  **Add network** at the bottom of Wi-Fi screen
- Enter the name of the network and any required network information.
- Touch **SAVE**.

### To forget a Wi-Fi network

The following steps prevent automatic connections to networks which you no longer wish to use.


- Turn on Wi-Fi, if it's not already on.
- On the Wi-Fi screen, touch the name of the saved network.
- Touch **FORGET** in the dialog that opens.

## 6.2 Connecting to a Bluetooth device<sup>(1)</sup>


Bluetooth is a short-range wireless communication technology that you can use to exchange data, or connect to other Bluetooth devices for various uses.

To turn on Bluetooth, touch **Settings** > **Bluetooth**, your phone and other available ones will show on the screen.

### To turn on Bluetooth

- Touch **Settings** > **Bluetooth** .
- Turn on  to activate this function.


To make your phone more recognizable, you can rename your phone which is visible to others.

- Touch **Settings** > **Bluetooth**.
- Touch  and **Rename this phone**.
- Enter a name, and touch **RENAME** to confirm.


<sup>(1)</sup> You are recommended to use alcatel Bluetooth headsets, which have been tested and proved compatible with your phone. You can go to [www.alcatel-mobile.com](http://www.alcatel-mobile.com) for more information about the alcatel Bluetooth headset.

## To pair/connect your phone with a Bluetooth device

To exchange data with another device, you need to turn Bluetooth on and pair your phone with the Bluetooth device with which you want to exchange data.

- Touch **Settings** > **Bluetooth**.
- Touch  and **Refresh**.
- Touch a Bluetooth device you want to pair your phone with in the list.
- In the dialog that pops up, touch **PAIR** to confirm.
- If the pairing is successful, your phone gets connected to the device.

## To disconnect/unpair from a Bluetooth device

- Touch  beside the device you want to unpair.
- Touch **FORGET** to confirm.

## 6.3 Connecting to a computer via USB

With a USB cable, you can transfer media files and other files between your phone and a computer.

### To connect your phone to the computer

With a USB cable, you can transfer media files and other files between your phone and a computer.

### To connect your phone to the computer

Use the USB cable that came with your phone to connect the phone to a USB port on your computer. You will receive a notification of **USB for file transfer**.

The first time you connect the phone via USB, a debugging dialogue box pops up, touch **OK** to allow data exchange between your phone and computer, otherwise, you can use USB for charging only.



Touch **USB for file transfer**, choose the way in which you want to transfer files. By default, **Transfer files (MTP)** is selected.



Before using MTP, make sure that the driver (Windows Media Player 11 or higher version) has been installed.

To locate the data you have transferred or downloaded to your phone, touch **Files**. All data you have downloaded is stored in **Files** where you can view media files (videos, photos, music and more), rename files, install applications on your phone, etc.

To locate the data you have transferred or downloaded to your phone, touch **Files**. All data you have downloaded is stored in **Files** where you can view media files (videos, photos, music and more), rename files, install applications on your phone, etc.

## 6.4 Sharing your phone's mobile data connection


You can share your phone's mobile data connection with a single computer via a USB cable (USB tethering) or with up to eight devices at once by turning your phone into a portable Wi-Fi hotspot or via Bluetooth.



The functions below may incur additional network charges from your network operator. Extra fees may also be charged in roaming areas.


### To share your phone's data connection via USB

Use the USB cable that come with your phone to connect the phone to a USB port on your computer.



- Touch **Settings** > **More** > **Tethering & portable hotspot**.
- Turn on  beside **USB tethering** to activate this function.

### To share your phone's data connection as a portable Wi-Fi hotspot

- Touch **Settings** > **More** > **Tethering & portable hotspot**.

- Turn on  beside **Portable Wi-Fi hotspot** to activate this function.

### To share your phone's data connection via Bluetooth

- Touch  on the Quick settings panel.
- Go to **More > Tethering & portable hotspot**.
- Turn on  after **Bluetooth tethering** to activate this function.

### To rename or secure your portable hotspot


When a portable Wi-Fi hotspot is activated, you can rename your phone's Wi-Fi network (SSID) and secure its Wi-Fi network.

- Touch **Settings > More > Tethering & portable hotspot**.
- Touch **Set up Wi-Fi hotspot** to rename the network SSID or set your network security.
- Touch **SAVE**.

## 6.5 Connecting to virtual private networks

Virtual private networks (VPNs) allow you to connect to the resources inside a secured local network from outside that network. VPNs are commonly deployed by corporations, schools, and other institutions so that their users can access local network resources when not inside that network, or when connected to a wireless network.

### To add a VPN

- Touch **Settings > More > VPN** and then touch .
- On the screen that opens, follow your network administrator's instructions to configure each component of the VPN settings.
- Touch **SAVE**.

The VPN is added to the list on the VPN settings screen.



Before adding a VPN, you should set a PIN code or password for your phone.

## To connect/disconnect to/from VPN

To connect to a VPN:


- Touch **Settings** > **More** > **VPN**.
- The VPNs you have added are listed. Touch the VPN you want to connect with.
- In the dialog that opens, enter any requested credentials and touch **CONNECT**.

To disconnect from a VPN:

- Open the Notification panel and touch the notification for the VPN disconnection.

## To edit/delete a VPN

To edit a VPN:

- Touch **Settings** > **More** > **VPN**.
- The VPNs you have added are listed. Touch  beside the VPN you want to edit.
- After editing, touch **SAVE**.

To delete a VPN:

- Touch  beside the VPN you want to delete, then touch **FORGET**.

# 7 Multimedia applications .....

## 7.1 Camera .....

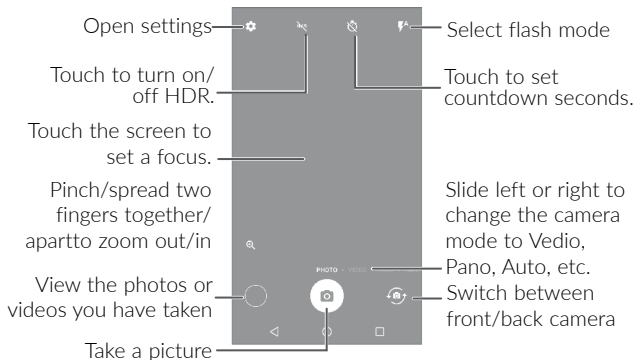


Your phone is fitted with a Camera and a Camcorder for taking photos and shooting videos.



Before using the Camera or Camcorder, make sure that you remove the protective lens cover to avoid it affecting your picture quality.

To take a photo or video, touch  from the Home screen and then touch **Camera**.



If the phone is locked, press the Power key and then swipe the camera icon to the left to open the camera.



## To take a picture




The screen acts as the viewfinder. First, position the object or landscape in the viewfinder, touch the screen to focus if necessary and touch  to take the picture which will be automatically saved. You can also long press  to take burst shots.

## To shoot a video


Slide the screen to the left to enter Video mode. Touch  on the bottom right of the screen to start video recording. You can also touch  to take a picture during video recording.

Touch  to stop recording. The video will be automatically saved.

## Further operations when viewing a picture/video you have taken

- Touch  from camera screen to view the photos or videos you have taken.
- Touch  then Gmail, Bluetooth, MMS, etc to share the photo or video.
- Touch  or slide down to return to **Camera**.

## 7.1.1 Settings

Before taking a photo/shooting a video, touch  to adjust a number of settings in framing mode.

### Photo





- **Size** Touch to select picture size.
- **Low light enhancement** Touch the switch to turn on/off enhance the light sensitivity when light is low.

### Video

- **Video quality** Touch to select the video recording quality.

- **Video stabilization** Switch the toggle to enable/disable video stabilization.


## General

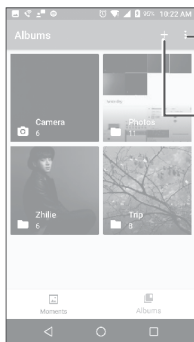
- **Manage modes** Touch to manage favorite camera modes.
- **Grid** Turn on  to enable grid view. It divides the screen into equal parts and helps you take better photos by making it simple to align compositional elements to the grid, such as the horizon or buildings to the lines in the grid.
- **Volume button function** Touch to set volume button function in camera mode.
- **Media storage** Touch to set up default storage location of pictures and videos captured.
- **Save location information** Turn on  to activate the function of tagging photos and videos with your location. This option is available when GPS location services and wireless network are switched on.
- **Shutter sound** Turn on  to enable shutter sound when taking a photo.
- **Zoom button** Switch the toggle to enable display zoom button  on camera screen..
- **Reset settings** Touch and confirm to reset the camera settings.

## 7.2 Gallery .....



Gallery acts as a media player for you to view photos and play videos. In addition, a set of further operations to pictures and videos are available for your choice.

To view the photos you have taken, touch  from the Home screen, then touch **Gallery**.



Touch to setup display of albums.

Access your albums.




### To view a picture/play a video


Pictures and videos are displayed by moments and albums in **Gallery**.

- All pictures and videos are divided by moments, and by albums. Touch an album to view pictures and videos spread on the screen.
- Touch the picture/video directly to view or play.
- Slide up/down to view previous or next pictures/videos.

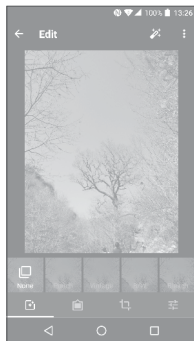
### Working with pictures

You can work with pictures by rotating or cropping them, sharing them with friends, setting them as a contact photo or wallpaper, etc.


Locate the picture you want to work on, and touch the picture in the full-screen picture view. Touch  to share the picture, or  to delete the picture. Touch  and select **Set as...** to set the picture as Contact photo or Wallpaper.


Touch  to set picture to **Favorites**, then the picture also can find in **Favorites** album. Touch again to remove from **Favorites**.

Touch  from full-screen picture view, more options will display for you to choose from.



 Set effects such as **Punch, Vintage, B/W, Bleach**, etc.

 Add a border.




 **Crop, Straighten, Rotate, Mirror** or **Draw** the picture.

 Adjust the picture colour.

## Batch operation

The Gallery provides a multi-select function, so that you can work with pictures/videos in batches.



On **Moments** or **Albums** screen, touch  and touch **Select items/Select albums** to activate batch operation mode (you can also long press one album/picture), then touch videos/pictures you want to work with. Touch  to delete selected files. Touch  to share selected files.

## 7.3 Music .....

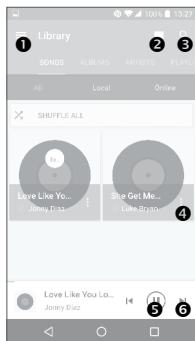


You can play music files stored on your phone or microSD card. Music files can be downloaded from your computer to the phone using a USB cable.

To play a music file, touch  from the Home screen, then touch **Music**.

### 7.3.1 Playing music

Touch a song to play.



- 1 Access the menu.
- 2 Change the song display.
- 3 Search for a song.

4 Access more functions.

5 Play or pause.

6 Play the next song.




While playing songs with Music, the operation of pause, play or skip is still available even if the screen is locked.

# 8

## Others .....

### 8.1 Files.....



To manage the files in your phone, touch  from the Home screen, then touch **Files**.

**Files** works with both external SD card and internal storage.


**Files** displays all data stored on the phone, including applications, media files downloaded from Google Play Store, YouTube or other locations; videos, pictures or audios you have captured; other data transferred via Bluetooth, USB cable, etc.

When you download an application from PC to phone, you can locate the application using Files, then touch it to install it in your phone.

**Files** allows you to perform and is really efficient with the following common operations: create (sub) folder, open folder/file, view, rename, move, copy, delete, play, share, etc.

### 8.2 Sound Recorder.....



To record voice, touch  from the Home screen, then touch **Sound Recorder**.

**Sound Recorder** allows you to record voice/sound for seconds/hours.

# 9 Google applications.....

Google apps are preinstalled on your phone to improve work efficiency and help you enjoy life.

This manual briefly introduces the apps. For detailed features and user guides, refer to related websites or the introduction provided in the apps.

You are recommended to register with a Google account to enjoy all the functions.

## 9.1 Chrome

A web browser with which you can surf the internet.

Your bookmarks, browsing history, and settings across all devices with the browser installed can be synchronized with your Google account.

## 9.2 Gmail

As the Google's web-based email service, Gmail is configured when you first set up your phone. With this application, you can receive and send mails, manage mails by labels, and archive mails, etc. Mails can be automatically synchronized with your Gmail account.

## 9.3 Maps

Google Maps offers satellite imagery, street maps, 360° panoramic views of streets, real-time traffic conditions, and route planning for traveling by foot, car, or public transportation. By using this application, you can get your own location, search for a place, and get suggested route planning for your trips.

## 9.4 YouTube

YouTube is an online video-sharing application where users can upload, view, and share videos. Available content includes video clips, TV clips, music videos, and other content such as video blogging, short original videos, and educational videos. It supports a streaming function that allows you to start watching videos almost as soon as they begin downloading from the internet.

## 9.5 Play Store

Serves as the official app store for the Android operating system, allowing users to browse and download applications and games. Applications are either free of charge or at a cost.

In Play Store, search for the app you need, download it and then follow the installation guide to install the app. You can also uninstall, update an app, and manage your downloads.

## 9.6 Drive

A file storage and synchronization service created by Google, which allows users to store files in the cloud, share and edit files.

Files in Drive are well kept and you can reach your files from any device by logging in to your Google account. Files or folders can be shared privately with particular users having a Google account.

## 9.7 Play Music

A music streaming service and online music locker operated by Google.

You can upload and listen to a large number of songs for free. In addition to offering music streaming for internet-connected devices, the Google Play Music app allows music to be stored and listened to offline. Songs purchased through the Play Music are automatically added to the user's account.

## 9.8 Play Movies & TV

Movies and television shows can be viewed online via Google Play Movies & TV. You can also download movies and TV shows for offline viewing. Some content is only available for rental or purchase.

## 9.9 Photos


Google Photos stores and backs up your photos and videos. It also automatically analyses photos and organizes them into groups, so that you can quickly locate the photos you need.

## 9.10 Keep

A note taking application developed by Google.

You can insert images, lists, and record voice in your notes, and set time or location-based reminders for notes. Google Keep allows you to categorize notes by labels, and notes are searchable based on their color, whether they have reminders, audio, images, or are lists.

# 10 Settings .....

To go to Settings, touch  from the Home screen, then touch **Settings**.

## 10.1 Suggestions

There are several frequently used function displayed here. Default items are **Screen lock** and **Add another email account**.

## 10.2 Wireless & networks

### 10.2.1 Wi-Fi

Using Wi-Fi you can now surf the internet without using your SIM card whenever you are in range of a wireless network. The only thing you have to do is to enter the **Wi-Fi** screen and configure an access point to connect your phone to the wireless network.

For detailed instructions on using Wi-Fi, refer to “**6.1.2 Wi-Fi**”.

### 10.2.2 Bluetooth

Bluetooth allows your phone to exchange data (videos, images, music, etc.) within a small range with another Bluetooth supported device (phone, computer, printer, headset, car kit, etc.).

For more information on Bluetooth, refer to “**6.2 Connecting to Bluetooth devices**”.

## 10.2.3 Data usage

### Data saver

By enabling **Data saver**, you can reduce data usage by preventing some apps from sending or receiving data in the background. 3 apps allowed to use unrestricted data when data saver is on.



Data usage is measured by your phone, and your operator may count differently.

## 10.2.4 More > Airplane mode

Turn on **Aeroplane mode** switch  to simultaneously disable all wireless connections including Wi-Fi, Bluetooth and more.

## 10.2.5 More > Tethering & portable hotspot

This function allows you to share your phone's data connection via USB or as a portable Wi-Fi access point (refer to “**6.4 Sharing your phone's data connection**”).

## 10.2.6 More > VPN

A phone virtual private network (mobile VPN or mVPN) provides phone devices with access to network resources and software applications on their home network, when they connect via other wireless or wired networks. Mobile VPNs are used in environments where workers need to keep application sessions open at all times, throughout the working day, as the user connects via various wireless networks, encounters gaps in coverage, or suspends-and-resumes their devices to preserve battery life. A conventional VPN can't survive such events because the network tunnel is disrupted, causing applications to disconnect, time out, fail, or even the computing device itself to crash.

For more information on VPN, refer to “**6.5 Connecting to virtual private networks**”.



## 10.2.7 More > Cellular networks

### Data roaming

If you don't need to transmit data on other operators' cellular networks, disable **Data roaming** to avoid incurring significant roaming charges.

### Access Point Names

You can select your preferred network with this menu.




### Network carriers

You can select a network operator.

## 10.3 Device

### 10.3.1 Gesture

The following gestures can be used for quick operations:<sup>(1)</sup>


- **Turn over to mute** Turn on  to mute ringtones of incoming calls by turning the phone over.
- **Turn over to activate snooze** Touch to set whether to activate the snooze feature or dismiss a ringtone when the device is turned over.
- **Double touch screen** Turn on  to enable the function that allows you to turn the screen on or off by a double tap.
- **Three finger screenshot** Turn on  to enable the function that allows you to drag 3 fingers down screen to take screenshot.

## 10.3.2 Lock screen


### Func

Touch to customize the application shortcuts displayed on your lock screen.

### Screen lock

Touch to set your screen unlock method. For example, you can unlock your phone by sliding the screen, entering a password, or drawing a pattern, etc. Touch  beside screen lock item, below options are available:

- **Make pattern visible**

This option only displays when you select Pattern to unlock your phone. Touch  to make pattern visible.

- **Automatically lock**

Touch to select the duration to lock the phone after the screen is off.

- **Power button instantly locks**

Touch  to enable power key lock the screen if pressing once.

- **Lock screen message**

Touch to input owner information which will display on the locked screen.

### Smart lock

You must set a screen lock first when you enable this function. Smart lock can recognize signals like your device's proximity to your home or your car's Bluetooth system, and keep your device unlocked when it's safe with you.

### 10.3.3 Display

In this menu, you can adjust your screen brightness, wallpaper, font size, color temperature of your screen, etc.

- **Brightness level** Touch to adjust screen brightness manually.
- **Adaptive brightness** When the function is turned on, the screen brightness level will optimize automatically according available light.
- **Night mode** Touch to set up Night mode.
- **Wallpaper** Touch to set the wallpaper.
- **Sleep** Touch to set screen timeout.
- **Press Power key twice for Camera** Touch  to turn on/off the function. When the function is on, you can tap the **Power** key twice to access **Camera** when screen is off.
- **Screen saver** Touch to set what happens when the phone is docked and/or sleeping.
- **Ambient display** Touch  to enable wake screen when receive notification.
- **Font size** Touch to set the font size.
- **Display size** Touch to set the display size.
- **When device is rotated** Touch to select whether the screen rotates automatically or not.

### 10.3.4 Notification

Touch to manage apps notification. You can set permission of apps notification, the authority to show the notifications on lacked screen, etc..

## 10.3.5 Sound

Use the Sound settings to configure many aspects of call ringtones, music, and other audio settings.

- **Silent mode** Switch the toggle to turn on/off Silent mode.
- **Ring volume** Set volume for media, ringtone, and alarms.
- **Phone ringtone** Touch to set your incoming call ringtone.
- **Also vibrate for calls** Switch the toggle to enable vibration for incoming calls.
- **Do Not Disturb** Touch to set how calls and notifications interrupt whatever you are doing on your phone.
- **Default notification ringtone** Touch to set the default sound for notifications.
- **Mute power on & off ringtone** Switch the toggle to enable/disable the power on & off ringtone.
- **Default alarm ringtone** Touch to set your alarm ringtone.
- **Emergency alerts** Touch to set emergency alerts.
- **Other sounds** Touch to set dial pad tones, screen locking sounds, touch sounds and vibrate on touch.

## 10.3.6 Apps

Touch to view details about the applications installed on your phone, to manage their data usage and force them to stop.

In the **App permissions** menu of an application, you can grant permissions for the app, such as allowing the app to access your **Camera, Contacts, Location**, etc.

In the **Notification** menu, you can configure whether to block the notifications from this app, hide sensitive content, etc.

### 10.3.7 Battery

Touch any category in the battery management screen to view its power consumption.

You can adjust power use via the screen brightness or screen timeout settings in the Display screen.


### 10.3.8 Memory

Touch to view the total memory and the memory used by applications.

## 10.4 Personal

### 10.4.1 Location

#### On

Turn on  to enable the use of information from Wi-Fi and cellular networks to determine your approximate location, for use in Google Maps, when you search, and so on. When you select this option, you're asked whether you consent to share your location anonymously with Google's location service.

#### Mode

Touch to select High accuracy, Battery saving or Device only mode.

- **High accuracy:** Use GPS, Wi-Fi and cellular network to determine location.
- **Battery saving:** Use Wi-Fi to determine location.
- **Device only:** Use GPS to determine location.

## Recent location requests

This list shows the recent location requests.

## 10.4.2 Security

### Encrypt phone

Requires a numeric PIN, pattern, or password to decrypt your phone each time you power it on.


### Make passwords visible

Turn on  to show passwords as you type.

### Device administrators

Touch to view or deactivate device administrators.

### Unknown sources

Turn on  to permit installation of applications that you obtain from websites, emails, or other locations other than Google Play Store.

To protect your phone and personal data, download applications only from trusted sources, such as Google Play Store.

### Storage type

Show storage type.

### Trusted credentials

Touch to display trusted CA certificates.

### User credentials

Touch to check and manage stored credentials.

## Install from storage

Touch to install encrypted certificates from internal storage or SD card.

## Clear credentials

Touch to remove all certificates.

## Trusted agents


Open the setting to view and deactivate trusted agents. You must set a screen lock first when you enable this function.

## Screen pinning

When this function is enabled, you can always keep a window in view by touching the **Overview** button and then the pin icon. In this case, the user cannot go to any other window or open any other app.

To stop pinning a window in view, long press both the **Back** and **Overview** keys together, then entering your screen unlock password or drawing your unlock pattern.


## Apps with usage access

Touch to display the apps which can track what apps you are using, and the using frequency. Turn on  to allow permission.

## 10.4.3 Accounts

Use the settings to add, remove, and manage your email and other supported accounts. You can also use these settings to control how and whether all applications send, receive, and synchronize data on their own schedules, and whether all applications can synchronize user data automatically.

### Add account

Touch the **Add account** icon  to add an account for selected app.

Touch an account to see all sync options. Mark the checkbox to permit applications to synchronize data on their own schedule. You can also touch **⋮** and **Sync now** to synchronize data for the chosen items of that account.


## 10.4.4 Google

### Location


Touch to access Location (refer to section “**10.4.1 Location**”).

### Security

**Remotely locate this device:** Turn on the switch , the device location can show on Android Device Manager.


**Allow remote lock and erase:** Turn on the switch , you can remotely lock or factory reset the device with Android Device Manager if you lose the device.

**Scan device for security treats:** Turn on the switch , Google will regularly check your device and prevent or warn about potential harm.

**Improve harmful app detection:** Turn on the switch , the device will send unknown apps to Google for better detection. Turn on Scan device for security treats first before turn on this function.

### Ads

**Reset advertising ID:** Touch to reset your advertising ID with a new random number.

**Opt out of Ads Personalization:** Turn on the switch , apps not to use your advertising ID to build profiles or show you personalized ads.

**Ads by Google:** Touch to open the Ads with Browser or Chrome.



## Nearby

Nearby allows Google recommend applications or websites for the user based on user's location information. When it detects the user is in the museum visit, it will be recommended to the user audio applications.

Your device must be online to show links to apps or websites from things nearby.

Touch **SCAN NOW** to scan available apps or website.

## Search & Now

The phone provides a search function which can be used to find the information you want on your phone, in your applications or on the web.

Touch to access settings about accounts and privacy, language, voice search, etc..

## Set up nearby device

This feature helps you restore your nearby device while you are in same Wi-Fi region and the device is adjacent to you. If you are booting your device for the first time, while setting it you will come across an option **Got another device**. Now select the option copy your Google accounts, apps, and data from your other device and click on **NEXT**. Follow the steps to finish the setup, the data will be copied from nearby device to your new device.


## 10.4.5 Language & input

Use the Language & input settings to select the language for the text on your phone and for configuring the onscreen keyboard. You can also configure voice input settings and the pointer speed.

## Language

Touch to select the language and the region you want.

## Spell checker

Turn on  to enable the system to show suggested words.

## Personal dictionary

Touch to open a list of the words you've added to the dictionary. Touch a word to edit or delete it. Touch the add button (+) to add a word.


## Virtual keyboard

**Google keyboard:** The Google keyboard settings apply to the onscreen keyboard that is included with your phone. The correction and capitalization features affect only the English version of the keyboard.

**Google voice typing:** Google voice typing is free speech-to-text capabilities which can let you input words by talking instead of typing by hand.


Tap the microphone icon on the on-screen keyboard to start Voice Typing.

## Physical keyboard

**Show virtual keyboard:** Touch the switch  to enable virtual keyboard on screen while physical keyboard is active.

**Keyboard shortcuts helper:** Touch to view the available keyboard shortcuts.

## Text-to-speech output

- **Preferred engine:** Touch to choose a Preferred text-to-speech engine, touch  to show more choices for each engine.
- **Speech rate:** Touch to open a dialog where you can select how quickly you want the synthesizer to speak.


- **Listen to an example:** Touch to play a brief sample of the speech synthesizer, using your current settings.

## Pointer speed

Touch to open a dialog where you can change the pointer speed, touch **OK** to confirm.

## 10.4.6 Backup & reset


### Back up my data

Turn on  to back up your phone's settings and other application data to Google servers. If you replace your phone, the settings and data you've backed up will be restored onto the new phone for the first time you sign in with your Google account. If you mark this option, a wide variety of settings and data are backed up, including your Wi-Fi passwords, bookmarks, a list of the applications you've installed, the words you've added to the dictionary used by the onscreen keyboard, and most of the settings that you configure in the Settings application. If you unmark this option, you stop backing up your settings, and any existing backups are deleted from Google servers.

### Backup account

Touch to set your backup account.

### Automatic restore

Turn on  to restore your backed-up settings or other data when you reinstall an application.

### Network settings reset

Touch to reset all network settings.

## Factory data reset

Erase all of your personal data from internal phone storage, including information about your Google account, any other accounts, your system and application settings, and any downloaded applications. Resetting the phone does not erase any system software updates you've downloaded.

If you reset the phone in this way, you're prompted to re-enter the same kind of information as when you first started Android.

When you are unable to power on your phone, there is another way to perform a factory data reset by using hardware keys. Press the **Volume up** key and the **Power** key at same time until the screen lights up.

## 10.5 System

### 10.5.1 Date & time

Use Date & time settings to customize your preferences for how date and time are displayed.

#### Automatic date & time

Turn on  to use the network-provided date and time.

#### Automatic time zone

Turn on  to use the network-provided time zone.

#### Set date

Touch to open a dialog where you can manually set the phone's date.

#### Set time

Touch to open a dialog where you can manually set the phone's time.

## Select time zone

Touch to open a dialog where you can set the phone's time zone.

## Use 24-hour format

Turn on  to display the time using the 24-hour clock format.

## 10.5.2 Accessibility

Use the Accessibility settings to configure any accessibility plug-ins you have installed on your phone.

### TalkBack

Touch to enable spoken feedback from your phone.

### Switch Access

Turn on Switch Access switch  to allows you to control your phone with configurable key combinations. Touch **SETTINGS** on the top right of the screen to assign key combination for listed behaviours.

### Captions

Touch to activate/deactivate captions for phone screen.

### Magnification gestures

Touch to turn on/off to activate/deactivate zoom in/out function by triple-tapping the screen.


### Font size

Touch the setup the font size of text on screen to default, larger and largest.


## Display size

Touch to setup the display size of items, such as app icon, message, etc.. Some apps on your screen may change position.

## Click after pointer stops moving

Touch the  to turn on/off the delay before click. Draw the indicator line to adjust how long to delay before click.


## High contrast text

Turn on  to activate high contrast text.

## Power button ends call

Turn on  to enable Power button ends call.


## Auto-rotate screen

Turn on  to activate auto-rotate screen. Content on the screen or the keyboard will be automatically rotated when you rotate your phone.

## Speak passwords

Turn on  to speak passwords while typing.

## Mono audio

Touch the  to enable/disable combine channels when playing audio.

## Accessibility shortcut

Touch to enable/disable quick activating for accessibility features.

## **Text-to-speech output**

Touch to update the settings for text-to-speech output, such as the speech rate.

## **Touch & hold delay**

Touch to adjust the duration of touch and hold delay. This function enables your phone to differ touch and touch & hold, which may avoid incorrect operations.

## **Color inversion**

Turn on  to turn on color inversion.

## **Color correction**

Touch to turn on/off color correction.

## **10.5.3 Regulatory & safety**

Touch to view product information.

## **10.5.4 About phone**

This contains information ranging from Legal information, Model number, Firmware version, Baseband version, Kernel version, Build number to those listed below:

### **System app updates**

Touch to check for system updates.

### **Status**




This contains the status of the Battery status, Battery level, My phone number, Network, Signal strength, etc.

# 11 Making the most of your phone.....

You can download software upgrades for free from the website ([www.alcatelonetouch.us](http://www.alcatelonetouch.us)):

## 11.1 FOTA Upgrade

Use the FOTA (Firmware Over The Air) Upgrade tool to update your phone's software. To access **Updates**, touch the Application tab from the Home screen, then select **Updates** or touch **Settings > About phone > Updates**.

Touch  and the phone will search for the latest software. If you want to update the system, touch the  button, and when that's finished, touch  to complete the upgrade. Now your phone will have the latest version of the software. You should turn on data connection or Wi-Fi before searching for updates. Settings for auto-check frequency are also available once you restart the phone. If you have chosen auto-check, when the system discovers the new version, a dialog will pop up to choose download or ignore, the notification will also appear in Status bar.

During FOTA downloading or updating, to avoid errors in locating the correct update packages, do not change your default storage location.



# 12 Accessories .....

The latest generation of alcatel mobile phones offers a built-in handsfree feature that allows you to use the telephone from a distance, placed on a table for example. For those who prefer to keep their conversations confidential, an earpiece is also available known as the headset.

1. Charger
2. USB cable
3. Stereo headset



Only use the alcatel batteries, chargers, and accessories included along with your device.

# 13 Warranty.....

Your phone is warranted against any defect or malfunctioning which may occur in conditions of normal use during the warranty period of twelve (12) months<sup>(1)</sup> from the date of purchase as shown on your original invoice.

Batteries<sup>(2)</sup> and accessories sold with your phone are also warranted against any defect which may occur during the first six (6) months<sup>(1)</sup> from the date of purchase as shown on your original invoice.

In case of any defect of your phone which prevents you from normal use thereof, you must immediately inform your vendor and present your phone with your proof of purchase.

If the defect is confirmed, your phone or part thereof will be either replaced or repaired, as appropriate. Repaired phone and accessories are entitled to a one (1) month warranty for the same defect. Repair or replacement may be carried out using reconditioned components offering equivalent functionality.

This warranty covers the cost of parts and labor but excludes any other costs.

This warranty shall not apply to defects to your phone and/or accessory due to (without any limitation):

- Non-compliance with the instructions for use or installation, or with technical and safety standards applicable in the geographical area where your phone is used;

<sup>(1)</sup> The warranty period may vary depending on your country.

<sup>(2)</sup> The life of a rechargeable phone battery in terms of conversation time, standby time and total service life, will depend on the conditions of use and network configuration. Batteries being considered expendable supplies, the specifications state that you should obtain optimal performance for your phone during the first six months after purchase and for approximately 200 more recharges.

- Connection to any equipment not supplied or not recommended by TCL Communication Ltd.;
- Modification or repair performed by individuals not authorized by TCL Communication Ltd. or its affiliates or your vendor;
- Modification, adjustment or alteration of software or hardware performed by individuals not authorized by TCL Communication Ltd.;
- Inclement weather, lightning, fire, humidity, infiltration of liquids or foods, chemical products, download of files, crash, high voltage, corrosion, oxidation...

Your phone will not be repaired in case labels or serial numbers (IMEI) have been removed or altered.

There are no express warranties, whether written, oral or implied, other than this printed limited warranty or the mandatory warranty provided by your country or jurisdiction.

In no event shall TCL Communication Ltd. or any of its affiliates be liable for indirect, incidental or consequential damages of any nature whatsoever, including but not limited to commercial or financial loss or damage, loss of data or loss of image to the full extent those damages can be disclaimed by law.

Some countries/states do not allow the exclusion or limitation of indirect, incidental or consequential damages, or limitation of the duration of implied warranties, so the preceding limitations or exclusions may not apply to you.

# 14 Troubleshooting .....

Before contacting the service center, you are advised to follow the instructions below:

- To have optimal operation, fully charge the battery.
- To improve the phone's performance, remove unnecessary files or apps on your phone.
- To update your system software, use the **System Updates** command in your phone's settings.
- To set your phone to factory default, use the **Backup & Reset** in the phone's settings. All your phone data will be lost permanently. It is strongly advised to fully back up your phone before resetting.

## **My phone can't be switched on**

- When the phone can't be switched on, charge for at least 10 minutes to ensure the minimum battery power needed. Then switch it on again.

## **My phone has not responded for several minutes**

- If your phone doesn't respond, turn off your phone by pressing and holding the **Power** key until it turns off and then restart it again.
- If your phone has a removable battery, remove the battery and re-insert it, then restart the phone.

## **My phone turns off by itself**

- When your phone turns off by itself, make sure that the Power key is not accidentally pressed.
- Check the battery charge level.
- Check your phone's settings for turning off the phone at a certain time.

- If it still doesn't work, **Factory** reset the phone via the Backup & reset in the phone's Settings. Make sure you have backed up your data.

### **My phone can't charge properly**

- Make sure that you are using the proper charger that comes with the phone.
- If your phone has a removable battery, make sure that your battery is inserted properly and the battery terminal makes a good contact with the phone. It must be inserted before plugging in the charger.
- Make sure that your battery is not completely discharged; if the battery power has been discharged for a long time, it may take around 10 minutes to display the battery charging indicator on the screen.
- Make sure that charging is carried out under normal conditions (0°C (32°F) to 55°C (131°F)).
- When abroad, check that the voltage input is compatible.
- Check that the charging port is secured or it's not damaged.

### **My phone can't connect to a network or "No service" is displayed**

- Try connecting to the network by moving to another physical location.
- Verify the network coverage with your carrier in your current area.
- Check with your carrier that your SIM card is valid.
- Make sure your phone's setting is not in airplane mode.
- If you are away from your carrier's network, you may need to enable roaming in the phone's settings to connect to other network. Roaming charges may apply.

### **My phone can't connect to the internet**

- Make sure that Cellular Data internet service is available in your wireless service plan.
- Check your phone's settings. Make sure **Cellular Data** is enabled or Wi-Fi connected.

- Make sure that you are in a place with network coverage for cellular data or Wi-Fi internet connection.
- Try connecting at a later time or another location.

### **Invalid SIM card**

- Make sure that the SIM card has been correctly inserted (see "Inserting or removing the SIM card").
- Make sure that the chip on your SIM card is not damaged.
- Make sure that the service of your SIM card matches the network you're on.

### **My phone can't make outgoing calls**

- Make sure that you have dialed a valid number and have touched Call on your phone.
- For international calls, check the country and area codes.
- Make sure that your phone is connected to a network, and the network is not overloaded or unavailable.
- Check your subscription status with your carrier.
- Make sure that you have not barred outgoing calls.
- Make sure that your phone is not in airplane mode.

### **My phone can't receive incoming calls**

- Make sure that your phone is switched on and connected to a network.
- Check for overloaded or unavailable network.
- Check your subscription status with your carrier.
- Make sure that you have not forwarded incoming calls.
- Make sure that you have not barred certain calls.
- Make sure that your phone is not in airplane mode.

### **The caller's name/number doesn't appear when a call is received**

- Check that you have subscribed **Caller ID** service with your carrier.
- Your caller may have concealed his name or number.

### **I can't find my contacts**

- Make sure that your SIM card is not broken.
- Make sure that your SIM card is inserted properly.
- Import all contacts stored in SIM card to phone.

### **The sound quality of the calls is poor**

- Adjust the volume during a call by pressing the **Volume** key.
- Check the network strength. Move to a location with stronger signal strength.
- Make sure that the receiver, connector or speaker on your phone is clean.

### **I can't use the features described in the manual**

- Check with your carrier to make sure that your subscription includes this service.
- Make sure that this feature doesn't require any additional accessory.

### **When I select a number from my contacts, the number can't be dialed**

- Make sure that you have correctly recorded the number in your file.
- Make sure that you have selected the country code when calling an international number.

### **I can't add a contact**

- Make sure that your SIM card contact list are not full; delete some files or save the files to the phone.

### **My callers can't leave messages on my voicemail**

- Contact your network carrier to check service availability.
- Set up your voicemail with your carrier, so that your caller can leave a message.

### **I can't access my voicemail**

- Make sure that your carrier's voicemail number is correctly entered in "Voicemail number".
- Try later if the network is busy.

## **I can't send and receive MMS**

- Check your phone storage as it might be full.
- Contact your network carrier to check service availability and MMS parameters.
- Verify the server center number or your MMS profile with your carrier.
- The server center may be swamped. Try again later.
- Start a new Messaging string. Your messaging string may have reached its limit.

## **SIM card PIN locked**

- Contact your network carrier to obtain the PUK (Personal Unblocking Key) code.

## **I can't connect my phone to my computer**

- Install Smart Suite.
- Check that your USB driver is installed properly.
- Open the Notification panel to check if the Smart Suite Agent has been activated.
- Check that you have marked the USB debugging checkbox.
- Check that your computer meets the requirements for Smart Suite installation.
- Make sure that you're using the right cable from the box.

## **I can't download new files**

- Make sure that there is sufficient phone storage space for your download.
- Select the microSD card as the location to store downloaded files.
- Check your subscription status with your carrier.

## **The phone can't be detected by others via Bluetooth**

- Make sure that Bluetooth is turned on and your phone is visible to other users.



- Make sure that the two phones are within Bluetooth's detection range.

### **The battery drains too fast**

- Make sure that you follow the complete charge time (minimum 200 minutes).
- After a partial charge, the battery level indicator may not be exact.
- Wait for at least 10 minutes after removing the charger to obtain an exact indication.
- Adjust the brightness of screen as appropriate.
- Extend the email auto-check interval for as long as possible.
- Update news and weather information on manual demand, or increase their auto-check interval.
- Exit background-running applications if they are not being used for extended periods of time.
- Deactivate Bluetooth, Wi-Fi, or GPS when not in use.

### **The phone becomes warm following prolonged calls, game playing, internet surfing or running other complex applications**

- This heating is a normal consequence of the CPU handling excessive data. Ending the above actions will make your phone return to normal temperature.

### **After Factory data reset is performed, I can't use my phone without entering Google account credentials**

- After reset is performed, you must enter the original Google account credentials that were used on this phone.
- If you don't remember your Google account credentials, complete Google account recovery procedures.
- If you still cannot access your phone, apply to the authorized repair center, but remember that it will not be regarded as warranty case.

### **The phone doesn't ring when a call or message arrives**

- Make sure that Do Not Disturb mode (go to **Settings > Sound > Do Not Disturb**) is not activated.

- Press the **Volume** key to adjust volume.

### **I forget some passwords/codes/keys on phone**

- Perform **Factory data reset**.
- If you still cannot access your phone, apply to the authorized repair center, but remember that it will not be regarded as warranty case.

**Alcatel** is a trademark of Alcatel-Lucent  
and is used under license by  
TCL Communication Ltd.

© Copyright 2017 TCL Communication Ltd.  
All rights reserved.

TCL Communication Ltd. reserves  
the right to alter material  
or technical specification  
without prior notice.

All "Signature" ringtones embedded in this phone have been composed, arranged, and mixed by NU TROPIC (Amar Kabouche).

*Life* **IS CALLING.**  
TAKE IT WITH YOU.

**CHARITYMOBILE.COM**

---

**1-877-474-3662**