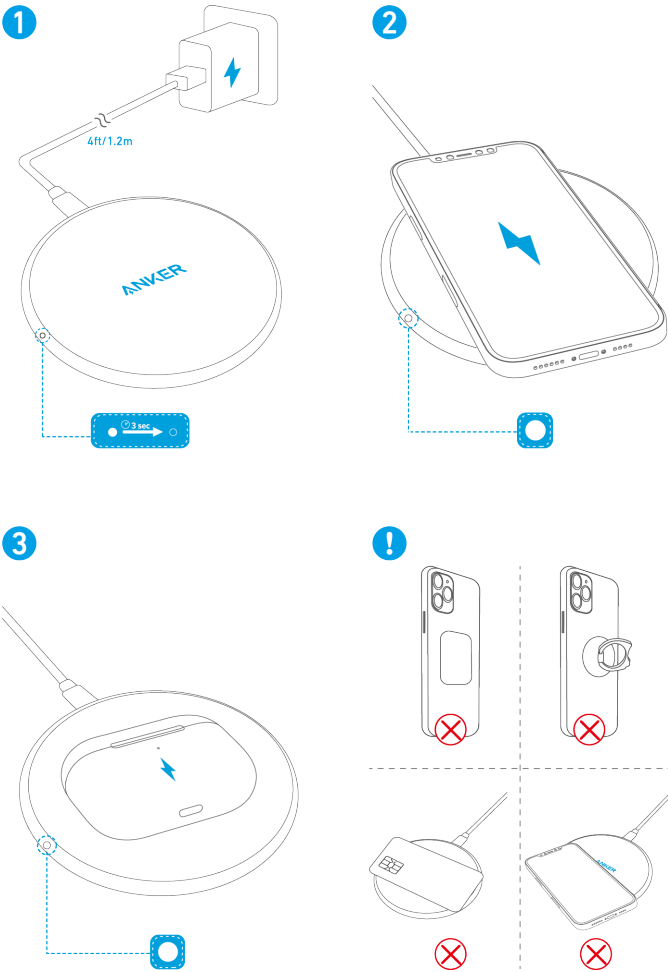


Using Your Wireless Charger



LED Indicators	Status
LED light stays solid white for 3 seconds, then off	Connected to power
LED light flashes white	<ul style="list-style-type: none">• Overvoltage or undervoltage protection activated.• Incompatible AC adapter connected. Switch to a Quick Charge 2.0/3.0 or Power Delivery adapter.
Solid white	Charing your phone